



Leica DX Office Shield Installation Quick Guide



Leica DX Office Shield 1.1 Install Guide

- when it has to be **right**



Getting Started

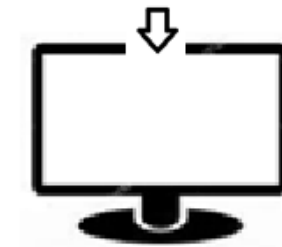
Introduction



DX Office Shield

Leica DX Office Shield is a Windows based software package for Leica DD Smart Locators, DA Signal Transmitters and data enabled Digicats. The software provides product configuration and usage reports.

Download and install DX Office Shield on your PC



www.leica-geosystems.com
Detection Systems > Software



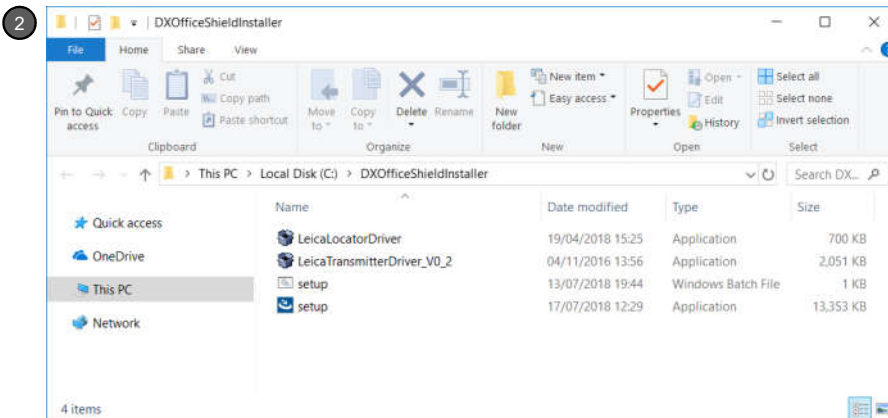
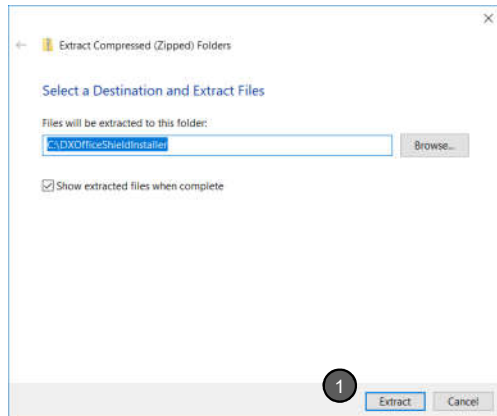
Register your locator
on Leica myWorld

- when it has to be **right**



Getting Started

Getting Started

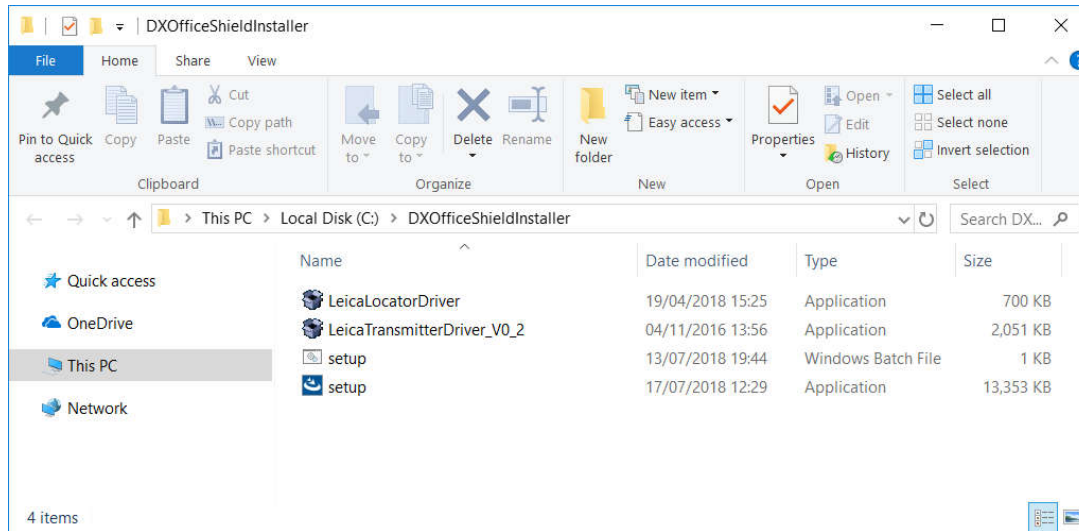


DX Office Shield Getting Started

- 1) Extract the contents of the downloaded Zip file to you hard drive. The Browse button can be used to change the default directory if required
- 2) When extracted the folder will open. Alternatively navigate to the folder location





Getting Started

Getting Started



DX Office Shield Getting Started

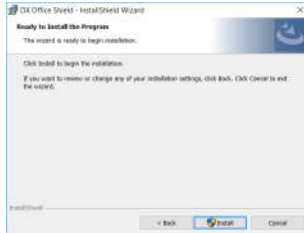
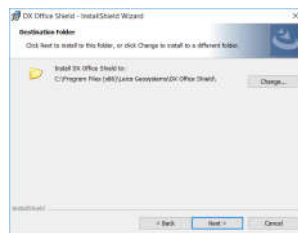
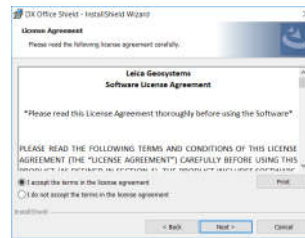
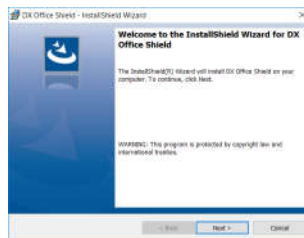
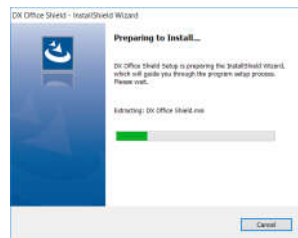
1) Folder Contents

-  **Leica Locator Driver;** Used to communicate to the DD SMART Locator
-  **Leica Transmitter Driver;** Used to communicate to the DA Signal Transmitters
-  **Setup;** Batch file used for full installation of Drivers and Software
-  **Setup;** Application file used to install DX Office Shield if the Driver are already installed


Getting Started

New Installation

Name	Date modified	Type	Size
LeicaLocatorDriver	19/04/2018 15:25	Application	700 KB
LeicaTransmitterDriver_V0_2	04/11/2016 13:56	Application	2,051 KB
setup	13/07/2018 19:44	Windows Batch File	1 KB
setup	17/07/2018 12:29	Application	13,353 KB



DX Office Shield New Installation

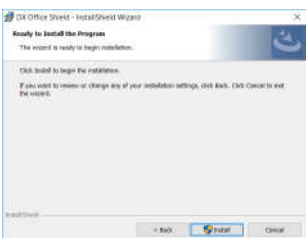
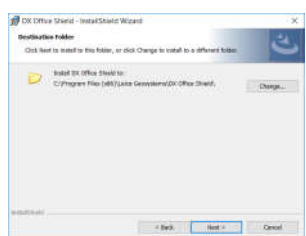
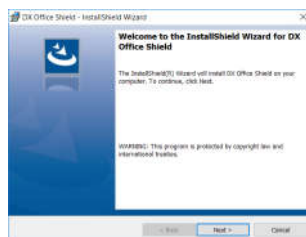
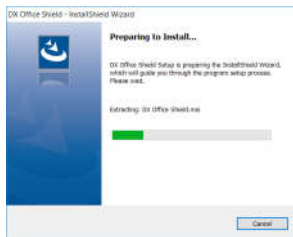
- 1) Select batch file set up 
- 2) Select Extract for the Locator and Transmitter Drivers
- 3) DX Office Shield Installer runs, progress this by selecting next, accepting the terms of Licence Agreement and finalising installation.

The installation can be cancelled or navigate back to the previous window throughout.

Getting Started


DX Shield Update

Name	Date modified	Type	Size
LeicaLocatorDriver	19/04/2018 15:25	Application	700 KB
LeicaTransmitterDriver_V0_2	04/11/2016 13:56	Application	2,051 KB
setup	13/07/2018 19:44	Windows Batch File	1 KB
setup	17/07/2018 12:29	Application	13,353 KB



DX Office Shield Update

If DX Office Shield has previously been installed the driver set up is not needed and DX Office Shield software can be installed

- 1) Select application set up 
- 2) DX Office Shield Installer runs, progress this by selecting next, accepting the terms of licence agreement and finalising installation.

The installation can be cancelled or navigate back to the previous window throughout.

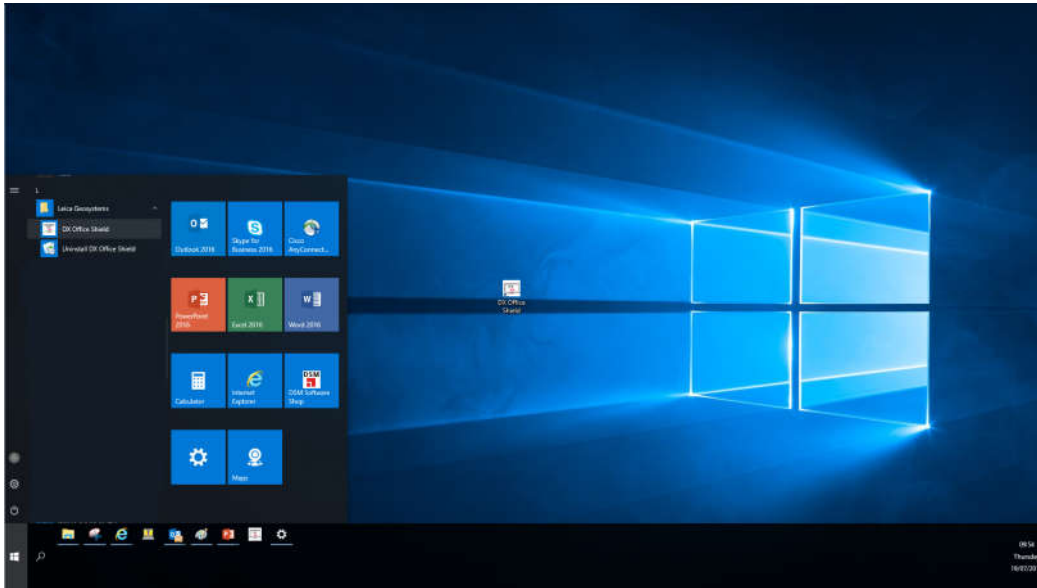
- when it has to be **right**



Getting Started

New Installation

1



DX Office Shield Location

When installed DX Office Shield can be accessed by;

- The desktop shortcut
- The Program Menu under **Leica Geosystems > DX Office Shield**

DX Office Shield – Support

Support enquires and questions please email;



dxshield.support@leica-geosystems.com